

20MWh

314Ah

2

20%

RTE

94%

GB/T 36276

90

20

5

37%

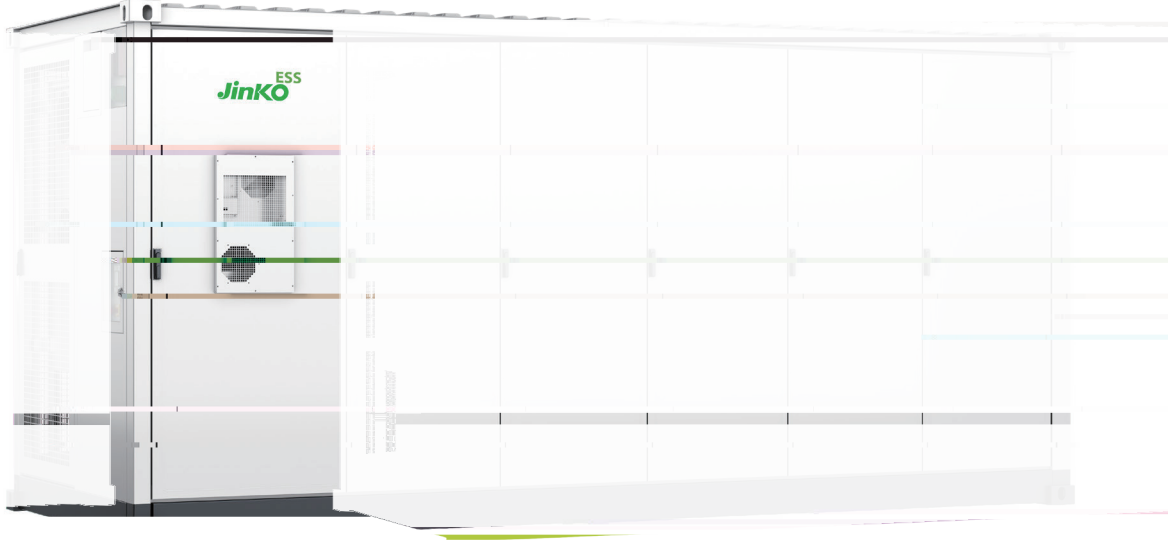
10%

PCS



JKE-3440K-2H-LAA

SunTera



280Ah



-
-



-
-

2.5



-
-

1000V / 1500V

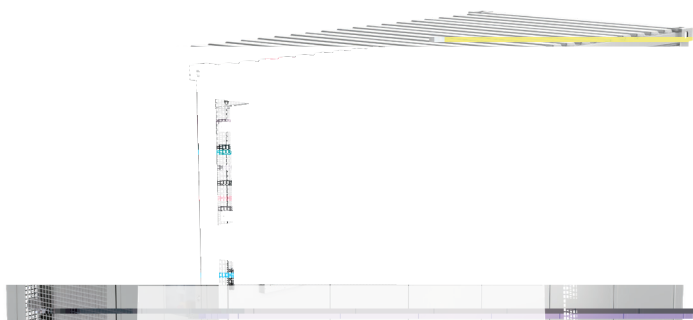
PCS



-
-

40

6.88MWh



	(LFP)
	3.2V/280Ah
	0.5P
	1P384S×10
	3.44 MWh
	1228.8V
	1075.2~1382.4V
	-20~50
	95%RH,
	2000m / <4000m (,)
	80dB(A), @ 1m
IP	IP54
	-20~45
	C3 (EN ISO 12944) / C4 () / C5()
	+ + + + +
	Ethernet/Fiber ()
(L×W×H)	6058×2438×2896mm
	35000 kg